

Journal

A LONDON ADDRESS
TO RETURN TO



9 HERTFORDST



INSIDE EXCLUSIVE GYM OFFERS | CULTURE PICKS | CURZON MAYFAIR

www.hertfordstreet.com

ISSUE 9

Welcome

At 9 Hertford Street, we offer premium self-catering apartments in the stylish Mayfair district of central London. Our dedicated concierge and housekeeping teams are on hand to ensure every aspect of your stay is effortless and enjoyable. Established in 1970, we are proud to have been awarded a four-star rating by *VisitEngland*, recognising our consistently high standards of service and accommodation.

Our apartments are set within an elegant period building on a quiet residential street, offering a sense of calm in the centre of the capital. Lift access is available to all floors (including our secure underground car park), making arrival and departure a little easier.

Each apartment is thoughtfully appointed with modern comforts including a 4K Smart TV in every living room, a fully equipped kitchen with washing machine and dishwasher and king-size beds in all bedrooms (or twin beds, on request). Guests also enjoy complimentary scented toiletries and free Wi-Fi throughout.

9 Hertford Street is ideally located within walking distance of London's most renowned parks, boutique shops, restaurants, historic landmarks, galleries and West End theatres.



SEAN CALITZ



SEAN CALITZ



LUCY SUTTON-LONG

ABOUT HERTFORD STREET

Hertford Street is located in Mayfair, one of the most exclusive areas of London. Mayfair earned its name from the May Fair which was originally established in the 1600s to raise funds for the Hospital of St James but continued until 1764 when the area became gentrified.

Mayfair was developed on fields belonging to the eminent Curzon family. During the mid-eighteenth century there became an increasing demand for London homes for the gentry to use during the months when parliament sat and the Royal Family were in residence.

Hertford Street was built on Brick Hill Field between 1764-1771 by Henry Holland the elder, his son and John Eldridge. Robert Adam designed the interiors, most notably at 10 Hertford Street. The houses are typically Georgian with panelled doors, fanlights,



LUCY SUTTON-LONG



SEAN CALITZ



SEAN CALITZ

cornicing and interior panels. Space was reserved for stabling for each property. The area retained a rural feel with a large duck pond nearby and a ruling that the green space off the neighbouring Down Street have no railings.

By the 1920s, 9 Hertford Street had been converted into apartments.

Hertford Street is named after the nearby Hertford Arms public house, which closed in the 1880s.

IN THE HEART OF MAYFAIR

Our apartments are set in a beautiful period Georgian dwelling in a quiet residential area, next to historic Shepherd Market – home of the May Fair – which is fondly known as “a Village in Piccadilly”.

9 Hertford Street offers a tranquil retreat to return to after a day's exploration of one of the world's most vibrant and cultural cities. Whatever your interests, you can be sure there will be something for you nearby.

Keep in touch and hear our latest news via social media



Make future bookings via our website





RA Summer Exhibition

CULTURE & THE ARTS

David Hockney **Serpentine North** (until 23 August)

A fantastic opportunity to explore Hockney's most recent works including 90-metre-long *A Year in Normandy* which was inspired by the Bayeux Tapestry.

Schiaparelli: **Fashion Becomes Art V&A** (until 8 November)

Exploring the work of Elsa Schiaparelli, who influenced her and who she has gone on to inspire.

Queen Elizabeth II: **Her Life in Style King's Gallery** (18 April – 18 October)

This much-anticipated exhibition features over 200 items from Queen Elizabeth II's wardrobe, many on public display for the first time.

Hepworth in Colour **Courtauld** (12 June – 6 September)

This major exhibition is the first to focus upon Hepworth's fascinating use of colour which was inspired by the landscapes and seascapes of Cornwall.

RA Summer Exhibition **Royal Academy of Arts** (16 June – 23 August)

This prestigious open submission exhibition features the works of both emerging and established artists.



David Hockney, *Abstraction Resting on a Red and White Checkered Tablecloth*, 2025. Acrylic on canvas (91.4 x 121.9 cm)

© DAVID HOCKNEY
PHOTO: PRUDENCE CUMING

BBC Proms **Royal Albert Hall** (18 July – 13 September)

This annual series of classical music concerts offers a fabulous variety of music performed in the historic Royal Albert Hall.

As You Like It **Shakespeare's Globe** (14 August – 25 October)

Be transported back in time and experience Shakespeare's pastoral comedy in the wonderful surrounds of Shakespeare's Globe, a faithful reconstruction of the original 1599 theatre.

V&A East Storehouse (permanent)

Voted one of *TIME's* World's Greatest Places of 2026, the V&A East Storehouse contains over 250,000 artifacts, 350,000 books and 1,000 archives.

COMING SOON

The 90s Tate Britain
(8 October – 14 February)

Vanessa Bell & Duncan Grant Tate Britain
(12 November – 11 April)

The Jungle Book Olivier Theatre
(13 November – 6 February)



DAVID PARRY, PA MEDIA ASSIGNMENTS

A visitor looks at a Ziggy Stardust costume designed for Bowie by Kansai Yamamoto in 1972 in the David Bowie Centre study room



CURZON MAYFAIR TODAY. RIGHT: OPENING NIGHT, 1966

LUCY SUTTON-LONG

COURTESY OF CURZON MAYFAIR

CURZON MAYFAIR

The Curzon Mayfair cinema is the jewel in the heart of Mayfair, and has been since its opening (then known simply as the Curzon) in 1934. Described by Historic England as "The finest surviving cinema building of the post-war period"; it has always striven "To present its patrons the Finest Films, irrespective of their origins" and shows international cinema alongside many of the hottest English language blockbusters.

It was all the brainchild of racecar driver and intelligence officer Pedro Monés. He spent seven months working in other cinemas under pseudonyms, determined to learn everything about a cinema's operations and how to make his the best. It was taken over during the war by the Directorate of Army Cinematography and used for screenings and photograph developments, but then re-opened as a cinema under the management of Harold Wingate, who made it the place to go for art house cinema in the city. During this time, the original building was demolished, re-opening as Curzon Mayfair in 1966, and has remained largely unchanged since; complete with William Mitchell's fibreglass murals in Screen 1.

It is a building simply steeped in history, with tales ranging from the controversial (activist Mary Whitehouse attempted to prosecute the

management over a screening of *La Grande Bouffe*, as she believed it broke public vagrancy laws) to the supernatural (a belief that a critic who passed away watching a film in 1952 still haunts the building to this day). In recent years, the cinema has been home to a full range of exciting and prestigious events, such as hosting premieres for the BFI London Film Festival; and regular red carpet screenings and gala events, for iconic films such as *The King's Speech* and *La La Land*, and more recently *The Penguin Lessons* and *Rental Family*. These have been attended by such stars as Emma Stone, Colin Firth and Ryan Gosling. It is truly a place where no two days are the same and you'll never know what (or who) you'll find.

With two full screens, a bar stocked with delicious and seasonal food, soft drinks and alcohol, and a truly wonderful ambience; if you're a fan of film, a visit to the Curzon Mayfair during your stay with us is a must.

We are deeply grateful to Nick Pan of Curzon Mayfair for sharing such fascinating insights, anecdotes and photographs which have been used in this article.

The Michelin Guide has revealed London's 12 best cinema and restaurant combinations and we're delighted, and unsurprised, that one of these dream pairings features the Curzon Mayfair and Murano (please see page 12 for restaurant details).



NORDIC BALANCE

NORDIC BALANCE

RESIDENT FITNESS

GUEST ACCESS TO TWO FIRST-CLASS FITNESS CLUBS AT SPECIAL RATES



NORDIC BALANCE

NORDIC BALANCE

We're delighted to collaborate with **Nordic Balance** and **Volt50** - two exceptional fitness destinations in central London – who are pleased to offer our guests exclusive preferential rates as part of their welcome.

Nordic Balance

Nordic Balance gym and health club is the perfect place to relax and unwind. Set in the exclusive In & Out Club in St James's Square, it has fantastic **gym facilities, a pool, spa, sauna and steam room.**

Its team of experts offer first class physiotherapy, sports massage, exercise rehabilitation, osteopathy, chiropractic treatment, podiatry and shockwave therapy. It's also home to London's oldest private squash court.

Discounted rate day passes can be purchased from our concierge (week and month passes are also available at the gym), and squash court slots can be reserved ahead of your visit.

“ I value my flexible working time as I exercise twice a week before coming to work. It helps to stay in shape and focus. Here's to Namaste in London! ” Aude

NORDIC BALANCE



NORDIC BALANCE

Volt50

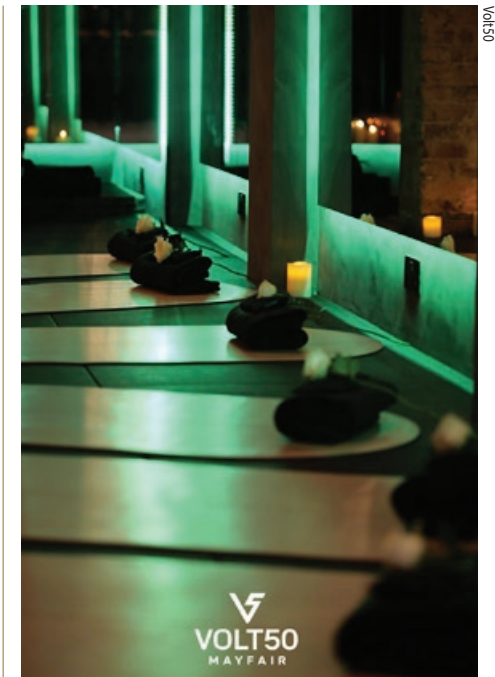
Volt50 on Queen Street is a boutique fitness studio offering a dynamic range of expertly delivered classes and personal training. This no-machine setting has been thoughtfully designed with gentle lighting, dark walls, mirrors and luxurious touches, offering a sanctuary where you can focus on your wellbeing journey without the distractions of noise. With a fantastic team of London's finest trainers, the programme of classes includes **Pilates, barre, yoga, sound baths, HIIT and Sanctum.**

Use code **9HERTFORDSTREET** when booking to receive our special discount.

Volt50



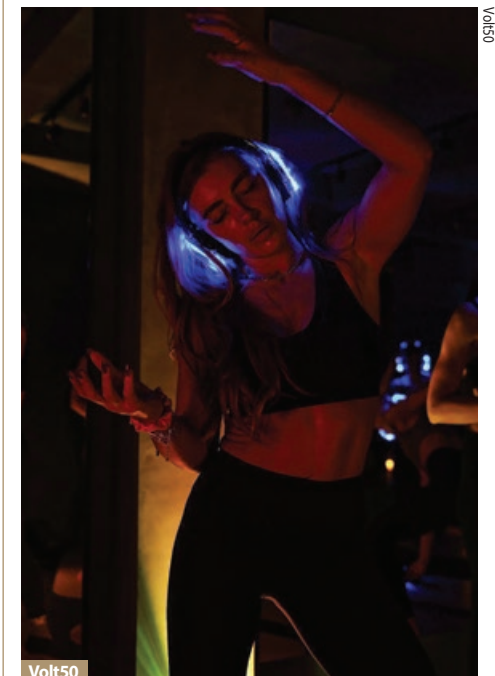
Volt50



Volt50

“ At Volt50, we believe in stripping back to the basics: Re-grounding and reconnecting with our bodies as the foundation of movement. No fancy machines or complicated technicalities. ”

Volt50



Volt50

DAY TRIPS FROM LONDON



Bath

Bath (2 hours by train)

Bath (in the West of England), with its beautiful Georgian architecture and thermal springs, became a UNESCO World Heritage Site in 1987 and a Great Spa Town of Europe in 2021. Attractions include the Roman Baths, Royal Crescent, The Jane Austen Centre, Bridgerton filming locations and Sally Lunn's historic eating house.

Brighton (1.25 hours by train)

Brighton is a picturesque seaside town set on the south coast. Its most famous building is the magnificent Royal Pavilion, built in 1787 for King George IV. Other attractions include the vintage shops along The Lanes, Devil's Dyke, the Toy and Model Museum, Volk's Electric Railway and of course, the beach!

Cambridge (1.5 hours by train)

The historic university town of Cambridge is set in the East of England. Attractions include King's College Chapel, the Scott Polar Research Institute, the Fitzwilliam Museum, Kettle's Yard art gallery, the historic Eagle public house and punting on the Cam.

Oxford (1.25 hours by train)

The beautiful town of Oxford is home to one of the world's most important research universities. Attractions include the fascinating Ashmolean Museum, the University Museum of Natural History, the Museum of the History of Science and punting along the Cherwell.

Rye (2 hours by train)

Rye is a pretty little town on the East Sussex coast. It's perfect for exploring independent and antique shops, Rye Pottery, Lamb House, the quintessential cobbled Mermaid Street and Rye Harbour Nature Reserve.



Brighton

York (2 hours by train)

This walled city has a fascinating history, dating from Roman times and with a Viking past, too. Highlights include the Gothic cathedral York Minster, the National Railway Museum (home to the world's fastest steam locomotive, The Mallard), The Shambles medieval cobbled street and Betty's Tea Rooms.



DISCOVER REAL LONDON

Why not take a tour of the beautiful Cotswolds in the luxury of a panoramic London black cab? Discover Real London offers a fantastic package which includes a door-to-door service with a qualified, knowledgeable driver guide. Director Ollie Crane explains: "This is more than a day trip — it's a journey into the England of storybooks, where every village feels like stepping back in time."

Visit www.discoverreallondon.com for further information and to book.

SHOPPING THE CURATED COLLECTION



1



2



3



4



5



6

1. HEYWOOD HILL (Curzon Street) Fabulous range of titles (including limited editions), gift boxes and book subscriptions. **2. G.E. TRUMPER** (Curzon Street) Founded in 1875, very special perfumer and barber offers its own line of luxury grooming products. **3. FARM SHOP** (South Audley Street) Seasonal produce as well as coffees, toasties and freshly-made sandwiches.

4. BURLINGTON ARCADE (Piccadilly) This elegant Georgian shopping arcade is home to a curated selection of boutiques offering designer fashion, accessories, and fine jewellery. **5. FLORIS** (Jermyn Street) Established at this address in 1730, Floris is the place for all things fragrant.

6. LIBERTY LONDON (Regent Street) Iconic fabrics, luxury beauty items, designer clothing and homeware. **7. BENJAMIN POLLOCK'S TOY SHOP** (Covent Garden) Established in 1856 and a favourite shop of Robert Louis Stevenson, its range includes toy theatres, shadow boxes and puppets as well as traditional toys. **8. ANYA HINDMARCH VILLAGE** (Pont Street) Unique and collectable items in the brand's trademark playful style.

Between 5 June and 16 August, the concept shop is selling ice creams (handmade in Devon) inspired by grocery store favourites. They are presented in iconic tubs which are an extension of the Anya Brands accessories collection.

“If you're looking for something special and unique, I highly recommend Rebecca H. Joselyn's beautiful silver pieces. A personal friend and most wonderful silversmith, her work can be purchased from www.designsinsilver.co.uk” Vladimir



7



8



8



For YOUNG Explorers



9 Hertford Street was built in 1771 (over 250 years ago) – before cameras, electricity, cars and planes were invented. The children who originally lived here would've passed the time by playing with spinning tops, hoops, marbles and hobby horses, and gone to the local parks and theatres with their families. You can still enjoy these activities, as well as some of our other favourite things, including:

- **Inside Aardman: Wallace & Gromit and Friends Young V&A** (until 15 November)
- **Oliver! Gielgud Theatre** (until 13 December)
- **Changing of the Guard Buckingham Palace** (10.45am Mon, Wed & Fri)
- **London Eye Westminster Bridge Road** (permanent)
- **London Transport Museum Covent Garden** (permanent)
- **Paradox Museum Brompton Road** (permanent)
- **Sherlock Holmes Museum Baker Street** (permanent)
- **The Cartoon Museum Wells Street** (permanent)
- **The Postal Museum Phoenix Place** (permanent)

I SPY

THINGS TO LOOK OUT FOR IN LONDON

- Red bus
- Red phone box
- London Underground sign
- Buckingham Palace
- A pigeon
- Black taxi
- Red post box
- Big Ben
- London Eye

DID YOU KNOW?

The story of Peter Pan was inspired by Kensington Gardens where you can find a statue of the character.

"...he could see trees far away, which were doubtless the Kensington Gardens, and the moment he saw them he entirely forgot that he was now a little boy in a nightgown, and away he flew, right over the houses to the Gardens."

Peter Pan in Kensington Gardens, J M Barrie



Changing of the Guard

SHUTTERSTOCK/ESONMILAN

WORDSEARCH

FIND ALL OF THESE WORDS

London, Underground, King, Queen, Palace, Guards, Thames, Big Ben, Paddington, Piccadilly

A B R P J Y V V P D N V
 A T S K A F G P Z N O H
 N O D N O L U T C U T K
 N E B G I B A B M O G X
 F N Y B G Y R C W R N M
 Q U E E N T D A E G I D
 U U K G H G S E Z R D X
 I N N A Q E A I X E D E
 D I M X I O Y Z E D A B
 K E X T Q A R X T N P P
 S I P Y F F V P C U H L
 U E P I C C A D I L L Y

MR MASTER

This is Mr Master, who gives the best cuddles. He loves going on days out and is always ready to pose for a photo with you.



YOUR LONDON

If you have any favourite drawings, stories or photos from your stay in London, we would love to see them!

TAILS of the City

The dog-friendly **Royal Kennel Club Art Gallery** on Clarges Street (just 0.3km from us) holds the world's largest collection of dog-related art and artifacts which date from the first century to the present day.

There are some lovely **green spaces** around Hertford Street including Hyde Park and Green Park, who welcome dogs on leads. Hyde Park's Serpentine Lido Café and Magazine Restaurant are dog-friendly which is just perfect for a welcome refreshment break whilst exploring the area.

Many of our local **cafés and pubs** welcome dogs, including the King's Arms, Shepherd Market Wine House, Chesterfield Arms, Ye Grapes (outside only) and Queens of Mayfair.

If you're looking for an outside activity to share with your dog, we highly recommend the walk or GoBoat ride along the beautiful **Regent's Canal**.

Some of London's cinemas offer **dog-friendly film screenings**. Please visit The Dogvine for listings alongside other dog-friendly activity and event recommendations. www.dogvine.com

Transport for London (TfL) welcome dogs on all buses, trains and tubes, and they travel for free. Please note that, unless they are assistance animals, dogs are not allowed on escalators unless they are being carried. Dogs can also travel on Uber Boats (Thames Clippers) and the Emirates Air Line cable car.



SHUTTERSTOCK/PEOPLEIMAGES

Why not capture your London adventure with a bespoke photo session for you and your dog? Friend of 9 Hertford Street Andrew Raven is an internationally award-winning canine photographer, renowned for capturing each dog's unique personality and the bond they share with their owner. Set against some of London's most iconic and meaningful locations, his work creates timeless, heartfelt images to treasure. Visit his website to find out more and book your photoshoot. www.ravenimagery.co.uk



RAVENIMAGERY



SEAN CALITZ



RAVENIMAGERY



THE FOOD EDIT

- Al Hamra Shepherd Market ££**
Good quality Lebanese cuisine since 1984.
- Chill House, Shepherd Street £ 🐾**
Greek speciality coffees, pastries and cakes for you, and puppuccinos for your companion. Great dishes from The Greek Pot on Tuesdays, Wednesdays & Thursdays.
- Da Corradi Shepherd Market £**
This 50-year-old family run restaurant has an extensive Italian menu and offers a fabulous selection of traditional breakfast dishes, too.
- El Pirata Down Street £**
Serving Spanish tapas for over 30 years. Buzzy and great bites and good wine list.
- Focaccia Factory Shepherd Street £**
Excellent range of focaccias, bruschettas, salads and traditional Italian dishes.
- King's Arms Shepherd Market £ 🐾**
Established in 1742, this is a friendly traditional pub with great views over Shepherd Market.
- Kitty Fishers Shepherd Market ££**
Daily menu of British food with a Spanish twist. Intimate and local neighbourhood feel. ££
- L'Artiste Muscle Shepherd Market £**
Long-standing Shepherd Market institution. Short Paris brasserie menu.
- L'Autre Polish-Mexican Restaurant Shepherd Street**
Eclectic and quirky. Pierogi and tortillas sit side by side on the menu. £
- Mercato Mayfair North Audley Street £-££ 🌿 🐾**
Food court in the unique setting of St Mark's Church offering a fabulous variety of international cuisine.
- Murano Queen Street ££**
Michelin star and 4 AA Rosette holder Murano offers Italian cuisine with a fantastic variety of vegetarian and vegan options.



- Noble Rot Trebeck Street ££**
Innovative and indulgent cuisine and a superb selection of wines.
- Sketch Conduit Street ££**
Located in Dior's former atelier, this beautiful Georgian building houses 5 stylish Sketch eateries. A fabulous place to enjoy a seasonal Afternoon Tea.
- Titu, Shepherd Street £**
Japanese small plates and a fabulous range of cocktails in the most charming setting.
- Queens of Mayfair Queen Street ££ 🐾**
A fabulous coffee shop which ethically sources the finest (and some of the rarest) coffees from around the world.
- Shepherd Market Wine House Shepherd Market ££ 🐾**
Good wine list and charcuterie and cheese platters.
- The Chesterfield Arms Hertford Street £ 🐾**
Traditional bar snacks, an a la carte menu, a Sunday menu and a great selection of wines.
- The Market Tavern Shepherd Street £**
Seasonal dishes, craft beers, draught lagers, wines and artisan spirits.
- Ye Grapes Shepherd Market £ 🐾 (outside only)**
As traditional as you could get and established in 1884. British ales and pub food.



Hertford Street could be considered a birthplace of the traditional British afternoon tea, having once been home to both Earl Grey and the Earl of Sandwich.

Plant-based
Dog-friendly

FIND YOUR LONDON



How to find us...

Address:
9 Hertford Street, Mayfair
London W1J 7RJ

Telephone: +44 (0)20 7491 7650

Email: reservations@hertfordstreet.com

Our car park entrance is at:
27 Brick Street, Mayfair, London, W1J 7DQ
(what3words: ///almost.nodded.stones.)

Proceed through the arch and then turn right, which will take you to our underground, secure parking with direct lift access to all floors (parking space must be pre-booked).

GUEST DIRECTORY

ESSENTIAL INFORMATION

Emergencies

- Please call **020 7491 7650** if you need to speak to our team out of hours.
- Fire procedures are located on the back of the apartment door.
- For emergency services (Ambulance, Police or Fire), please call **999**.

Non-Emergency Medical & Dental

- For non-emergency medical assistance, please call **111**.
- Our local doctor's surgery is **Mayfair Doctors** at 37 North Audley Street, W1K 6ZL (tel: 0207 499 1581).
- Our closest dental practice is **The Health Society** at 10 Lees Place, W1K 6LL (tel: 020 7499 1746).
- Our nearest chemist is **Pharmacy at Mayfair & Clinic** at 4 Shepherd Market, W1J 7QB (tel: 020 7493 2309).
- **Medivet Hyde Park** is our local vets at 61 – 63 Connaught Street, W2 2AE (tel: 020 7723 0453).

Reception opening hours

08:00-20:00 (Monday to Friday)

10:00-18:00 (Saturday & Sunday)

Check-in

Between 14:00 and 20:00

(self check-in is available after 20:00).

Check-out

Check-out is by 11:00 (earlier check-in is available for an additional charge).

All apartment, front door, garage and safe keys must be returned upon leaving.



DAVID TETT



LUCY SUTTON-LONG

Your stay

For the comfort of all residents and guests, this is a non-smoking building.

Parties are strictly prohibited.

As we are a residential building with several apartments, we kindly ask that you are mindful of noise, especially when arriving and leaving.

Please see our website for our full Terms & Conditions.

Electricity

The supply is 230V utilising the UK standard 3 pin plug. Adaptors can be obtained from **Romany's Hardware Store** on Shepherd Street.

Please do not use the smaller sockets in the apartment as these are specifically for lighting.

LOCAL AMENITIES

Groceries

Our nearest supermarket is **Tesco Express** on Curzon Street, W1J 7UP. There is a **Marks & Spencer Food to Go** next to Green Park Station and a **Sainsbury's Local** at 38 Stratton St, W1J 8LT.

Supermarkets can also deliver to 9 Hertford Street via their online ordering services.

Uber Eats and **Deliveroo** also serve our area.

Gyms

Nordic Balance on St James's Square offers exceptional facilities including a gym, pool, spa, sauna, steam room and squash court within the historic In & Out Club. Discounted day passes are available via our concierge. Its team of experts also offer first class physiotherapy, sports massage, exercise rehabilitation, osteopathy, chiropractic treatment, podiatry and shockwave therapy.

Volt50 on Queen Street is a boutique studio with a dynamic range of classes and personal training. Use code '9HERTFORDSTREET' when booking online to receive our special discount.

Postal services

Mayfair News at 28 Shepherd Market offers banking, postal and parcel services.

Service station

Our closest service station is **Esso** on Park Lane, W1K 7HB.



LUCY SUTTON-LONG

Transport

Our nearest tube stations are:

Green Park (Jubilee, Piccadilly and Victoria lines) – 0.5 km

Hyde Park Corner (Piccadilly line) – 0.5 km

Bond Street (Elizabeth line) – 1 km

London black cabs can be picked up from Park Lane at the end of Hertford Street, where you will also find two TfL bus stops – Hilton Hotel Stop A and Hilton Hotel Stop B.

Uber Boats by Thames Clippers is another great way to travel across the capital.

Visit the TfL website (www.tfl.gov.uk) for full London transport information and live updates.



LUCY SUTTON-LONG

WELCOME TO YOUR APARTMENT

Please enjoy the complimentary refreshments and toiletries provided for your stay.

Selection of Rave Coffee drinks

Rave Coffee is a Cotswold based coffee roaster who focus upon brewing speciality coffee. All packaging is recyclable and they pledge 1% of all sales to environmental causes.

Selection of Good and Proper Tea Company teas

The Good and Proper Tea Company's teas are responsibly sourced from around the world and come in 100% plastic-free packaging.

Delamere Dairy milk

Delamere Dairy is an award-winning family company which is passionate about health, animal welfare and sustainability.

La Perruche sugar

Established in the 1890s, La Perruche grows it's premium, unrefined sugar on Reunion Island in the Indian Ocean. The subtle caramel flavour is the perfect accompaniment to our coffees.

Hildon Natural Mineral Water

Holder of a Royal Warrant and 7 times winner of a Restaurant Magazine Award, Hildon's water is lauded for its PH neutrality which makes it the perfect accompaniment to food and wine.



SEAN CALITZ



SEAN CALITZ

Frank's Luxury Biscuits

Created from a family recipe from the 1950s, these delicious biscuits are handmade and contain only natural ingredients.

Brown Bag Crisps

Made using potatoes from the local area, Brown Bag Crisps are hand cooked in small batches to ensure their high quality is maintained.

Arran Sense of Scotland toiletries

Your luxury, cruelty-free toiletries have been created by Arran Sense of Scotland on the Isle of Arran where the beautiful surroundings have inspired their collection.